



Pollinator Buffet

Supporting the Food web

Native bees, honeybees, butterflies, moths, and other insects pollinate the vast majority of flowering plants, and one-third of our food crops. Native flowers are vital food sources for keeping pollinator populations healthy. By choosing these landscape-worthy natives featured in the Pollinator Buffet series, you will provide nectar and pollen from early spring through late fall for pollinators.



Presented by:

Grow Native! and the Grow Native! member network of garden center retailers.



More than 10 different plants in the Pollinator Buffet program to add to your garden!

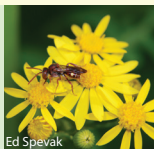
Learn more at www.grownative.org!



Photos by Ed Spevak

Plants featured in the Pollinator Buffet program bloom at different times. By including them all in your garden or landscape, you will have food sources for pollinators throughout the growing season!

Blooms Early to Mid-Spring



Ed Spevak

***Packera obovata* – golden groundsel**

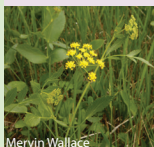
The plants, consisting of rounded, year-round, dark-green foliage 3-5" high, spread moderately fast to form an excellent ground cover. Full sun to full shade. Blooms April to May. Flowers are 10-14" H

***Baptisia australis* – blue wild indigo**

An outstandingly formal-looking plant for landscape purposes, remaining attractive from spring until fall. A very long-lived perennial. Full sun. Blooms April to June. 24-36" H



Mervin Wallace



Mervin Wallace

***Zizia aptera* – heartleaf golden Alexander**

Attractive for its foliage and yellow flowers lasting six weeks, which are followed by ornate seed clusters. Hosts black swallowtail caterpillars. Full to half sun. Blooms April to June. 12-18" H

***Penstemon digitalis* – foxglove beardtongue**

The bright-white flowers are magnets for many long-tongued bees and hummingbirds. Attractive seed pods are almost red in summer. Foliage red in fall. Full to half sun. Blooms May to June. 30-48" H



Mervin Wallace

Blooms Late Spring to Mid-Summer



Mervin Wallace

***Hydrangea arborescens* – wild hydrangea**

A fast-growing, small shrub with many flattened 3-4" clusters of white flowers that attract many bees and other pollinators. Half sun to full shade. Blooms May to July. 4-5' H

***Monarda fistulosa* – bee balm**

A large clump-forming plant producing many long-lasting lavender flowers for bees, butterflies, and hummingbirds. Full to half sun. Blooms June to July. 36-48" H



Mervin Wallace



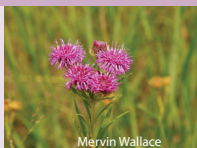
Mervin Wallace

***Pycnanthemum tenuifolium* – slender mountain mint**

An attractive and non-spreading mint that is an excellent nectar plant for butterflies and bees. Attractive in fall and winter. Full to half sun. Blooms June to August. 20-36" H

***Vernonia arkansana* – curlytop ironweed**

An attractive plant from head to toe, not a "weed." Sizable plant for the back of beds and rain gardens. Attracts many bees and butterflies. Full to half sun. Blooms July to August. 36-48" H



Mervin Wallace

Blooms Mid-Summer to Fall



Mervin Wallace

***Liatris scariosa* – eastern blazing star**

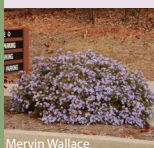
Has the most intense color and seems to be the best *Liatris* for attracting butterflies. The dried flower stalks are attractive into winter. Full to half sun. Blooms August to September. 30-54" H

***Solidago speciosa* – showy goldenrod**

The vertical flower clusters go well with rough blazing star, New England aster, and other tall species. Full sun. Blooms September to October. 30-48" H



Mervin Wallace



Mervin Wallace

***Symphotrichum oblongifolium* – aromatic aster**

Profuse branching and small leaves give aromatic aster a small shrub appearance from late spring through flowering time. Full sun. Blooms September to November. 12-30" H